

**17L
4019**

Nissan Navara Md. 2015

Styling bar 60
Styling-Bügel 60
Arceau 60



ASSEMBLY INSTRUCTION

Montageanleitung • Instructions de montage



60 Minuten



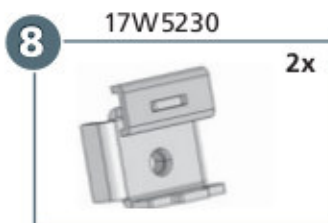
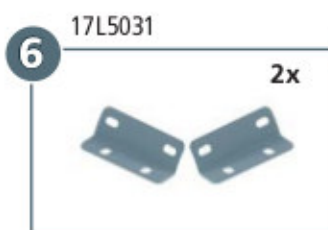
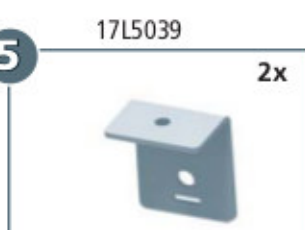
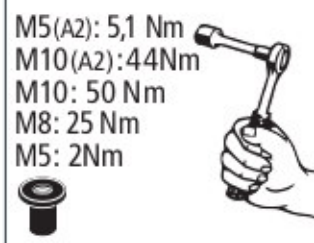
ULLSTEIN
CONCEPTS
GMBH

Artikel-Nr:

17L4019

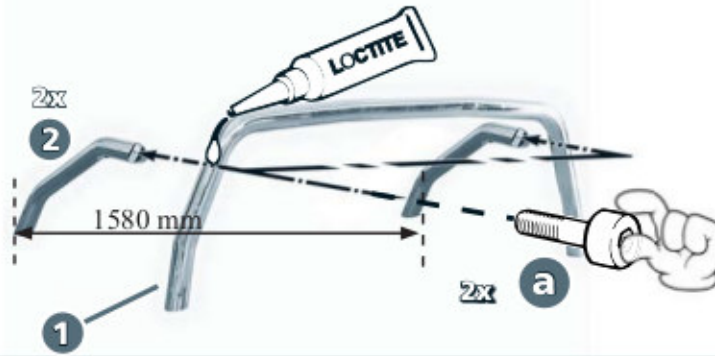
17L5019 black steel

Revision 3: 15.11.2016

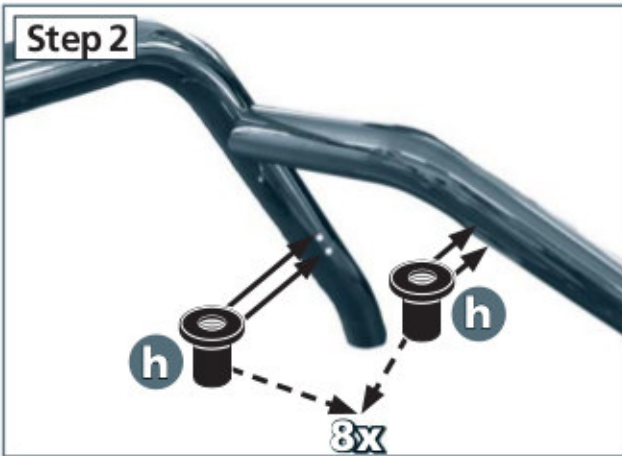


a		M10x30; DIN 912 A2	2x
b		M5x20; DIN 933 A2	8x
c		M10x40; DIN 933 Zn	2x
d		M8x30; DIN 7991 A2	4x
e		M5; DIN 985 A2	8x
f		ø5,3; DIN 125 A2	16x
g		ø10,5; DIN 125 Zn	2x
h		Getowell M5	8x
i		SW8	16x
j		SW17	2x
k		M8x25; DIN 933 Zn	2x
l		Ø 8,4; DIN 9021 Zn	2x
m		SW 13	2x

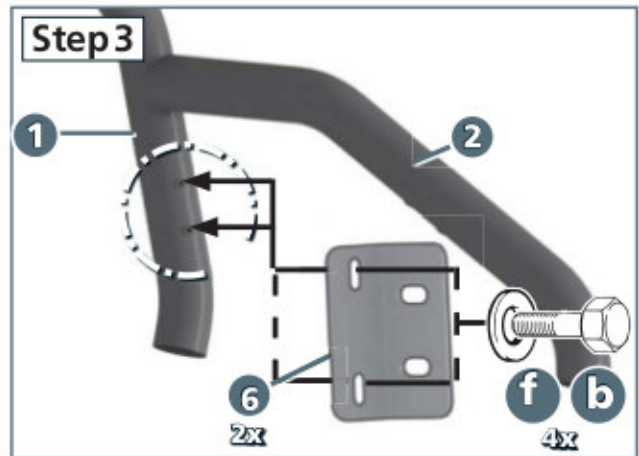
Step 1



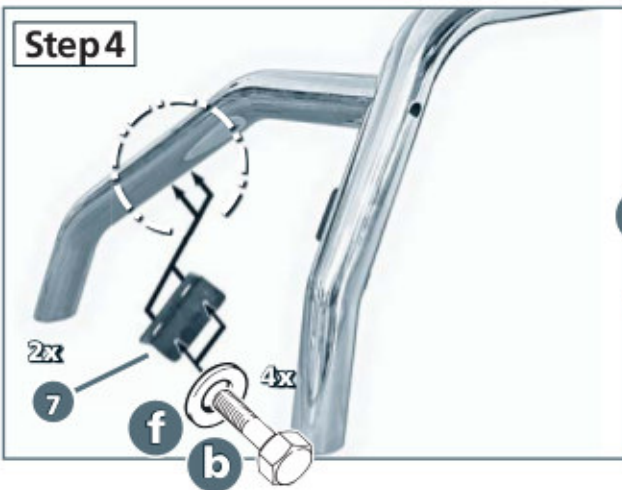
Step 2



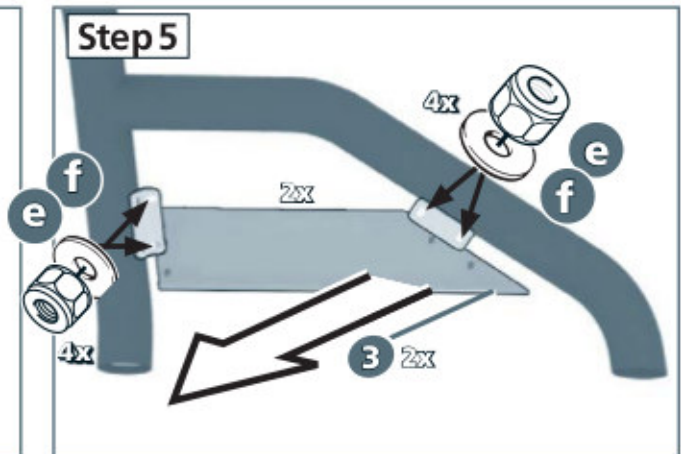
Step 3



Step 4

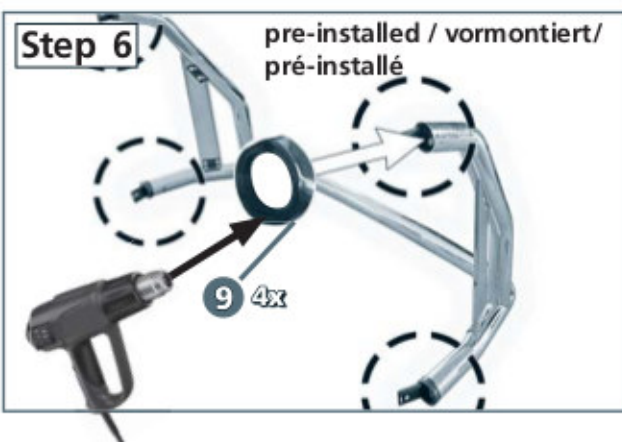


Step 5

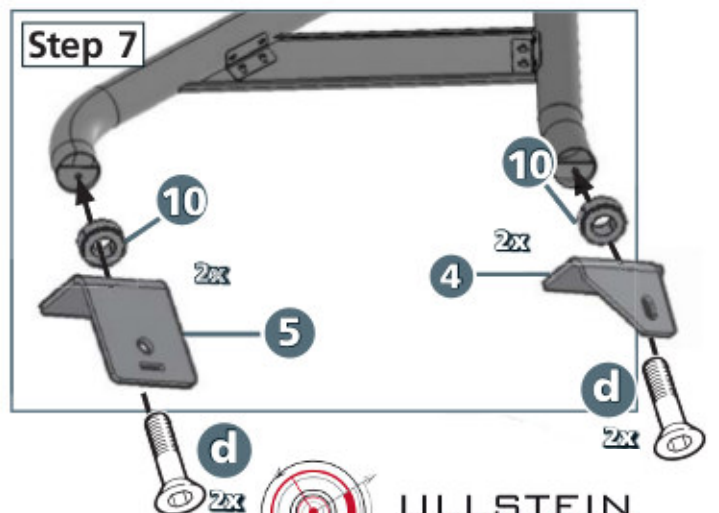


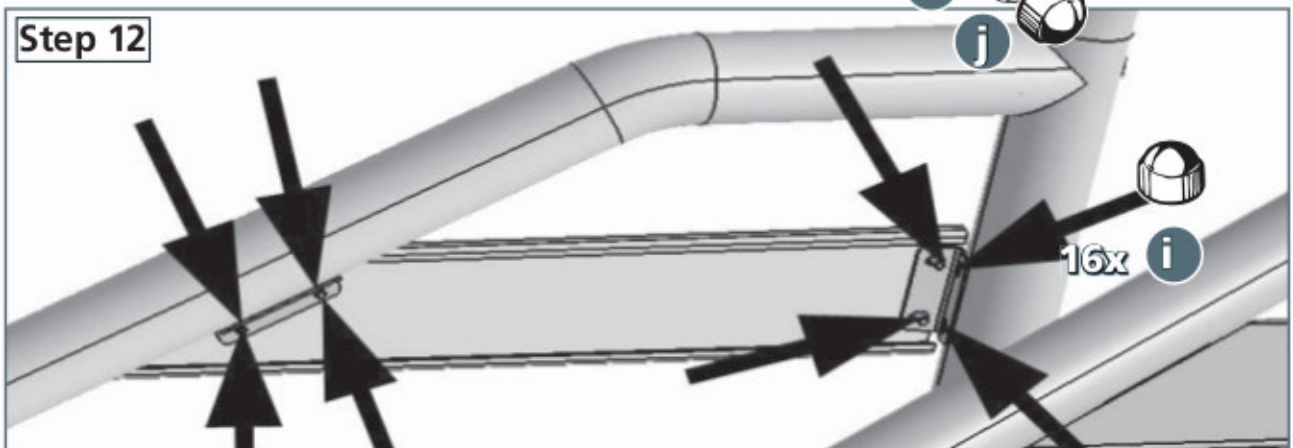
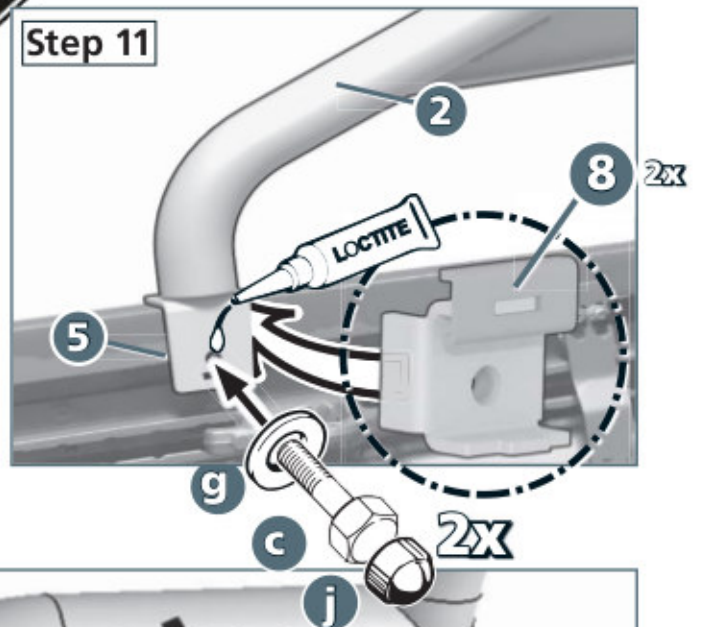
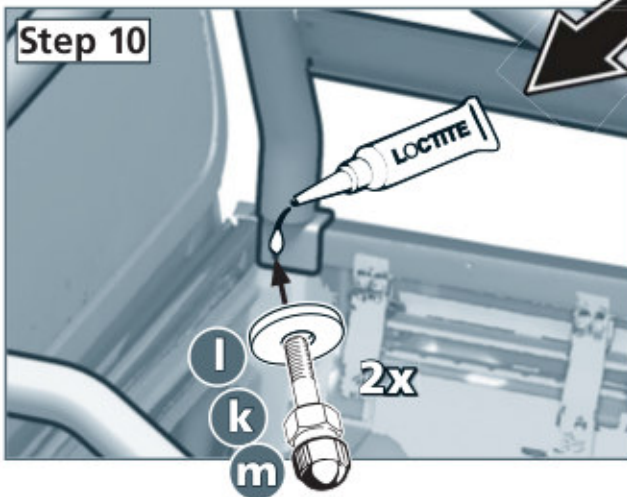
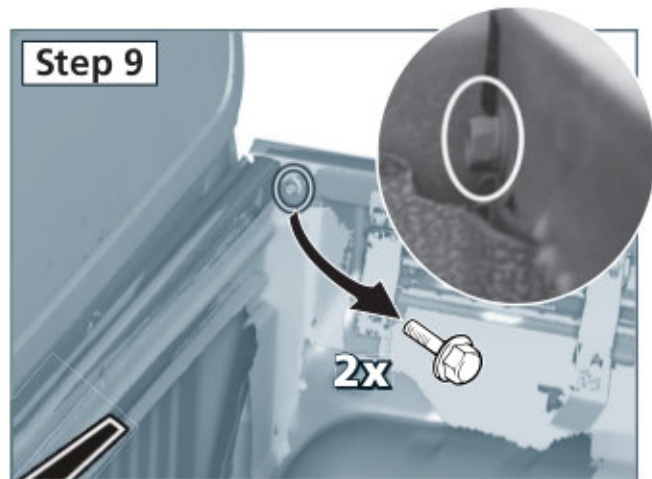
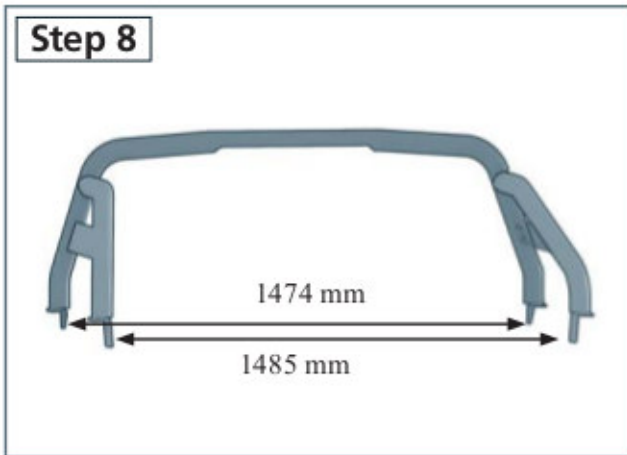
Step 6

pre-installed / vormontiert /
pré-installé



Step 7





M5(A2):	
5,1 Nm	
M10 (A2):	
44 Nm	
M10:	
50 Nm	
M8: 25 Nm	
M5: 2 Nm	

Revision 3: 15.11.2016



**ULLSTEIN
CONCEPTS
GMBH**