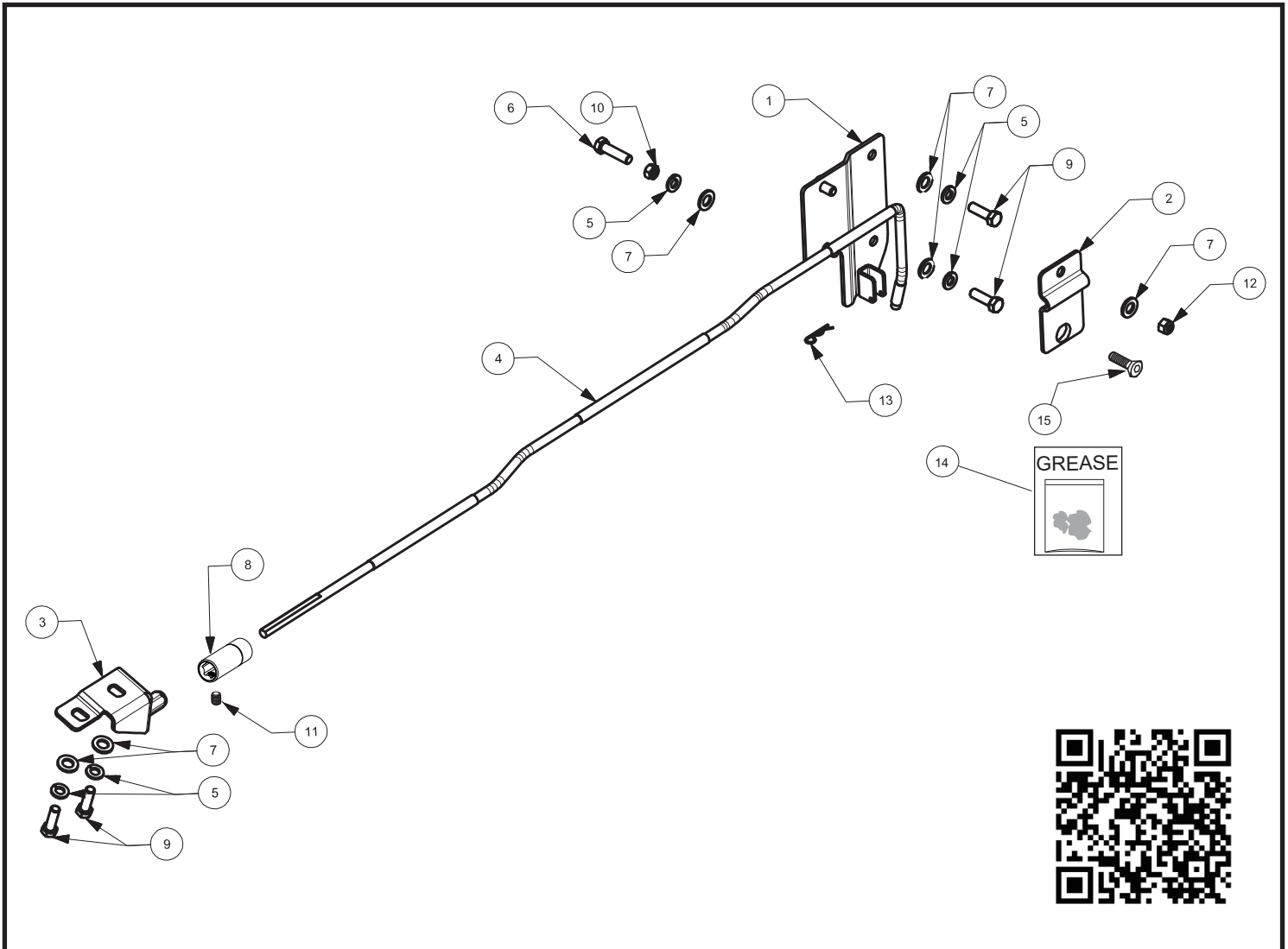


INSTALLATION INSTRUCTION

AEROKLAS TAILGATE LIFT UP&DOWN NISSAN NAVARA 2020 D/C, K/C AND BENZ X350d



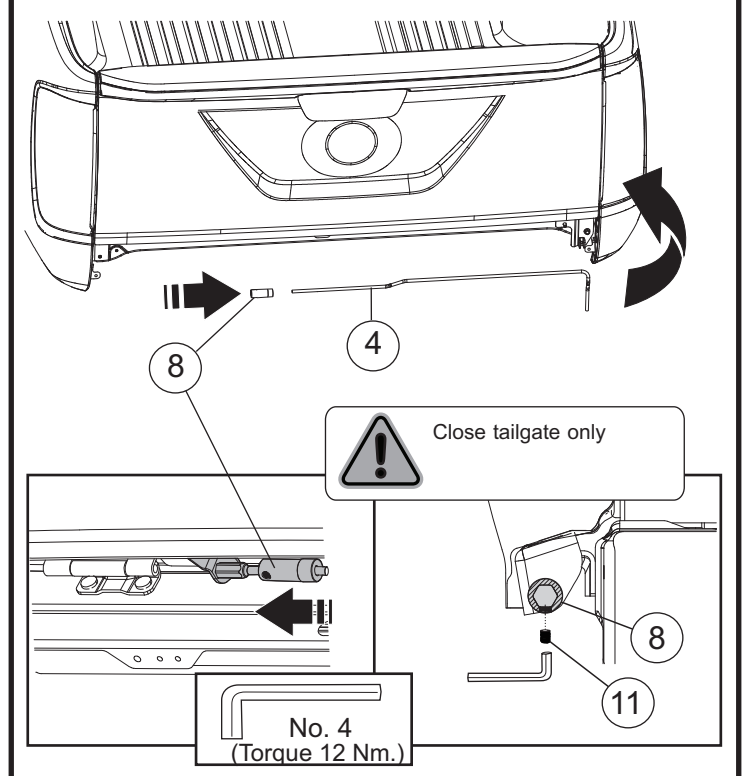
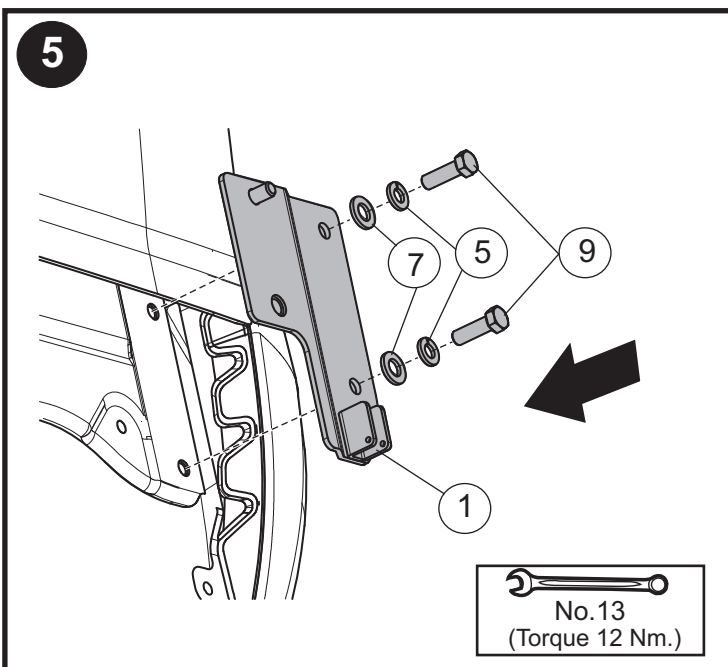
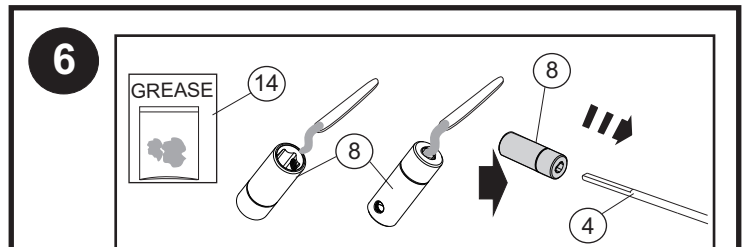
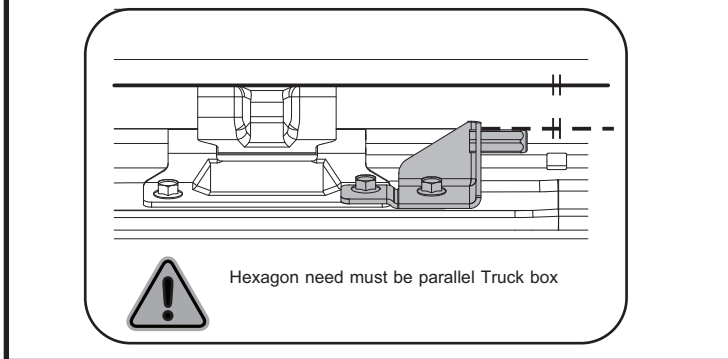
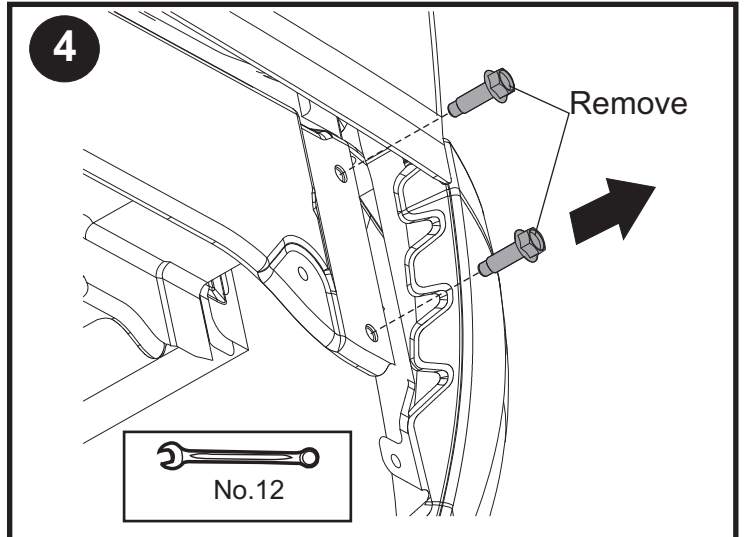
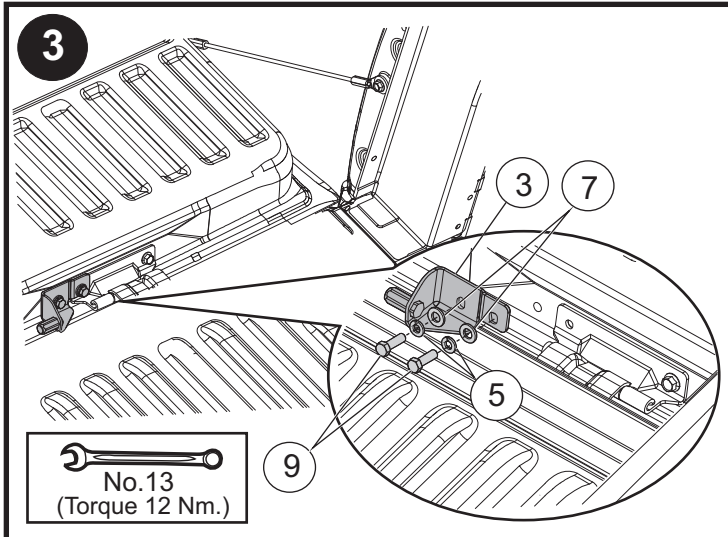
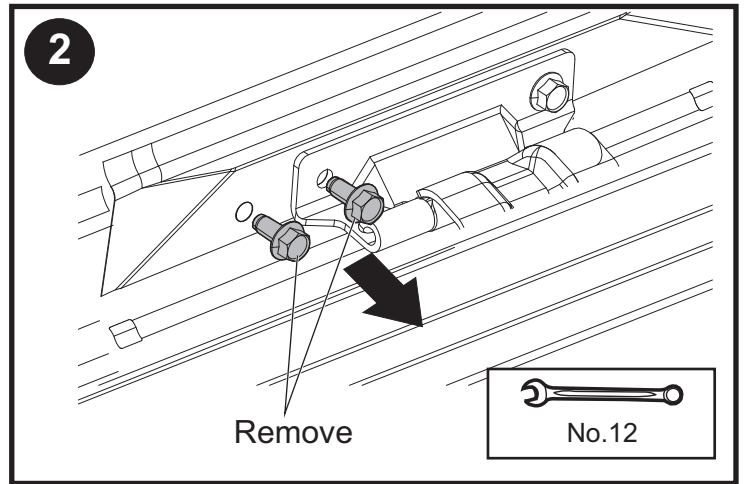
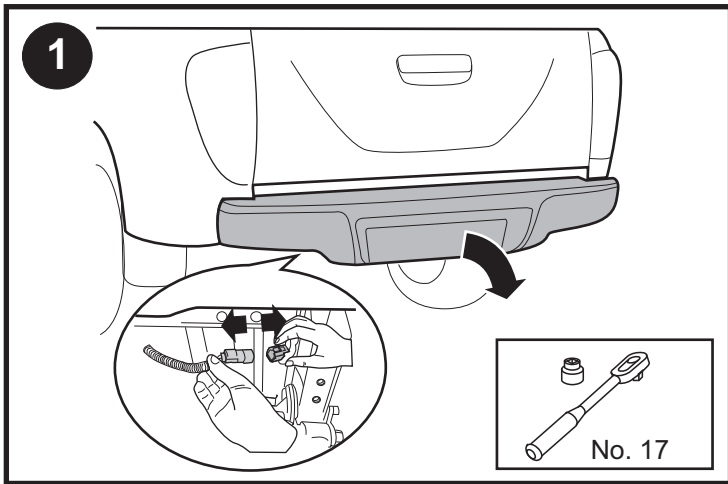
ULLSTEIN
CONCEPTS
GMBH



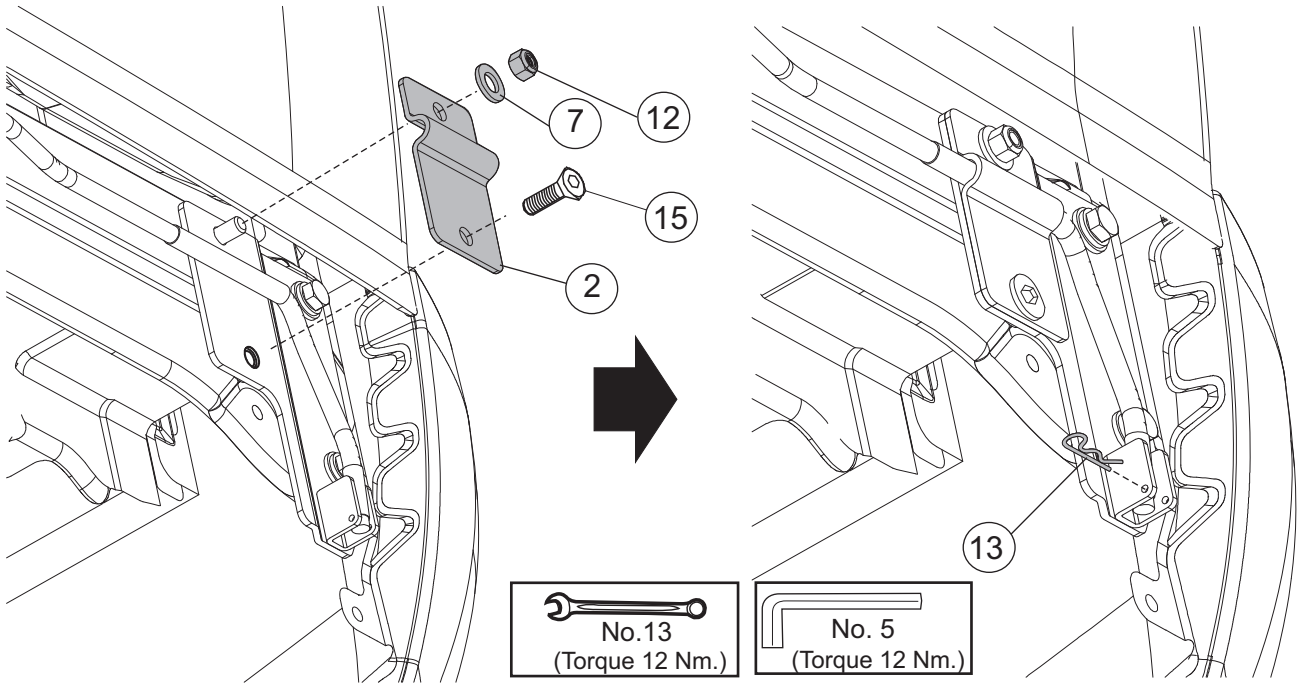
No.	Part Name	Part No.	Q'ty
1.	LOWER PLATE TORSION BAR FOR NISSAN	-	1
2.	UPPER PLATE TORSION BAR FOR NISSAN	-	1
3.	SUPPORT PLATE SHAFT CONNECTOR FOR NISSAN	-	1
4.	TORSION BAR FOR NISSAN	-	1
5.	SPRING WASHER M8	-	5
6.	HEX BOLT M8X1.25X30 mm.	-	1
7.	WASHER M8	-	6
8.	SHAFT CONNECTOR FOR TORSION BAR	-	1
9.	HEX BOLT M8X1.25X25 mm.	-	4
10.	HEX NUT M8X1.25X25 mm.	-	1
11.	SOCKET SET SCREW M8X1.25X8 mm.	-	1
12.	NYLON LOCK NUT M8X1.25X8 mm.	-	1
13.	CLEVIS PIN R	-	1
14.	GREASE	-	1
15.	FLAT HEAD SOCKET CAP SCREW M8X1.25X16mm.	-	1

Installation Tools

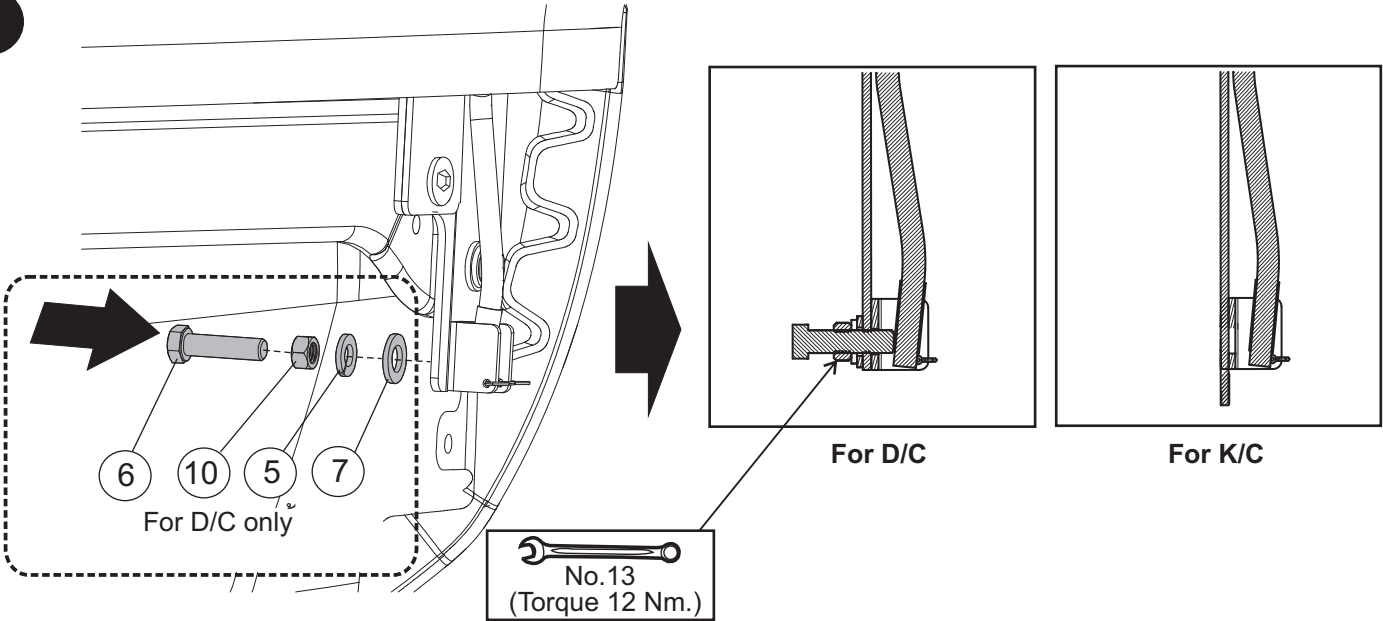
1. Open-Ended Wrench No.12,13
2. Allen Wrench No. 4, 5
3. Scket Wrench No. 17



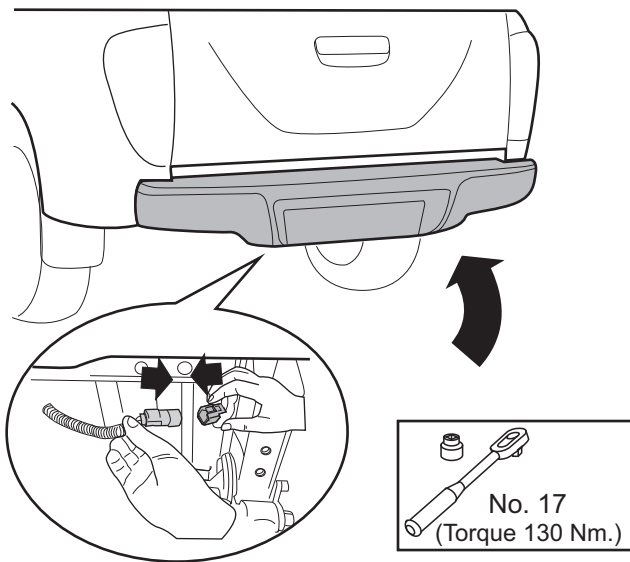
7



8



9

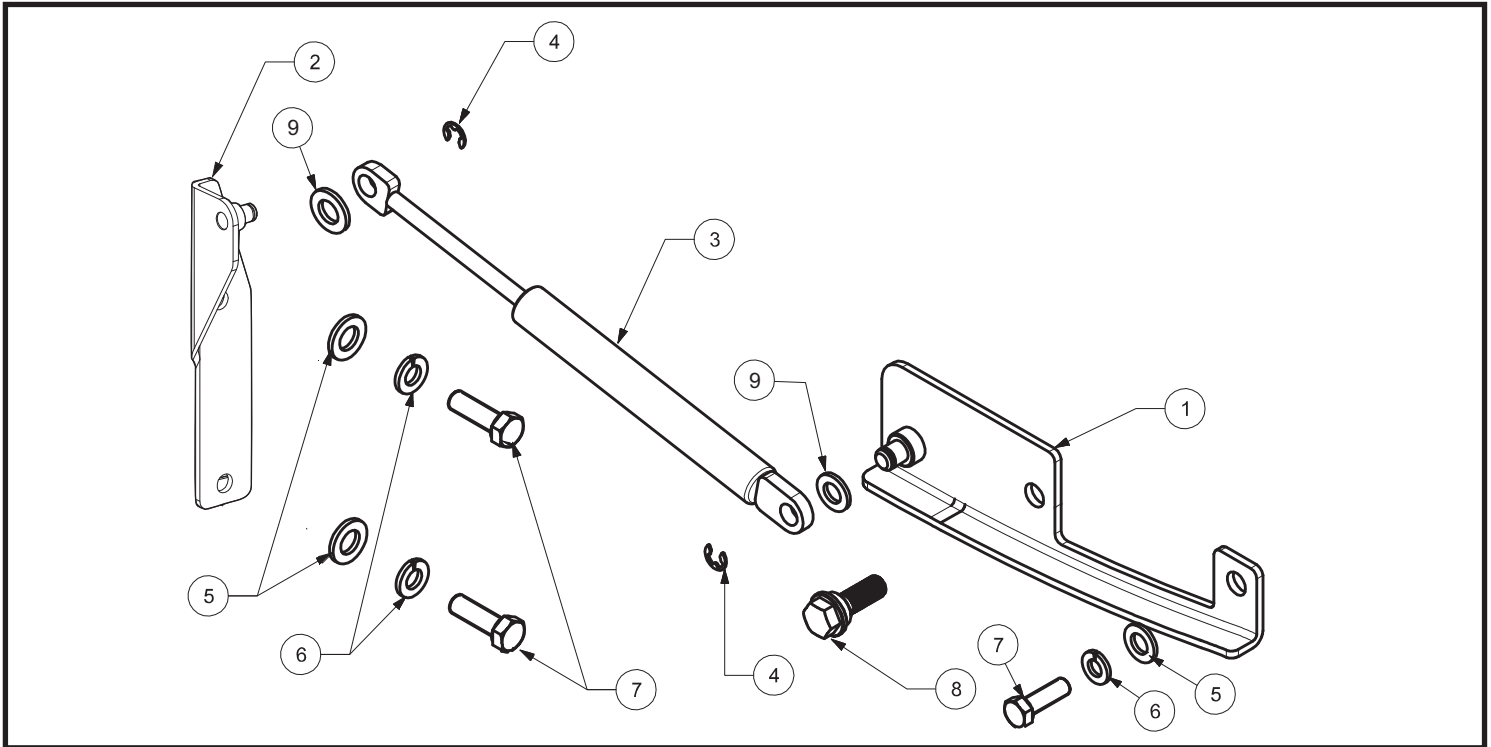


INSTALLATION INSTRUCTION

AEROKLAS DEMPER FOR NISSAN NAVARA 2020 D/C, K/C



ULLSTEIN
CONCEPTS
GMBH



No.	Part Name	Part No.	Q'ty
1.	UPPER SUPPORT DAMPER FOR NISSAN	-	1
2.	LOWER SUPPORT DAMPER FOR NISSAN	-	1
3.	DAMPER	-	1
4.	E-RING	-	2
5.	WASHER M8	-	3
6.	SPRING WASHER M8	-	3
7.	HEX BOLT M8x1.25x25mm.	-	3
8.	SPECIAL BOLT M8x1.25x20	-	1
9.	NYLON WASHER M8 (OD15x1.0 mm)	-	2

Installation Tools

1. Open-Ended Wrench No.12, 13
2. Socket Wrench No.12, 13

